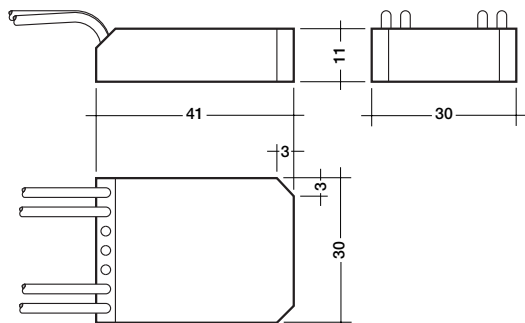


## Converter module DALI to DSI signal

### DALI DSI



#### Functional description:

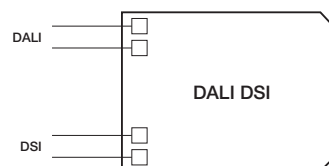
- The converter module converts DALI commands into DSI signal so that all DSI-based operating devices presently available, such as PCA ECO ballasts, TEL transformers or PHD phase dimmers, can be integrated in DALI lighting control systems.
- The DALI DSI operates whilst the programming mode equal to a PCA EXCEL one4all, i.e. the DALI DSI has its own address and can be assigned to groups and scenes.

Note: No status feedback possible.

#### Installation:

- The DALI DSI can easily be installed into a luminaire or flush socket.
- The DALI DSI must not be connected to the mains. It is supplied directly via the DALI signal line.
- DALI signals are not SELV. Therefore the same procedures should be applied as working with mains voltage.

Type	DALI DSI	
article number	24034689	
supply	-	via DALI signal line
current	-	16 mA
input	-	DALI signal
output	digital DSI control signal	1
	no. of ballasts	5 PCA/TEL/PHD
addresses	-	1
temperature	permitted ambient temperature	0 °C – 50 °C



Circuit diagram

